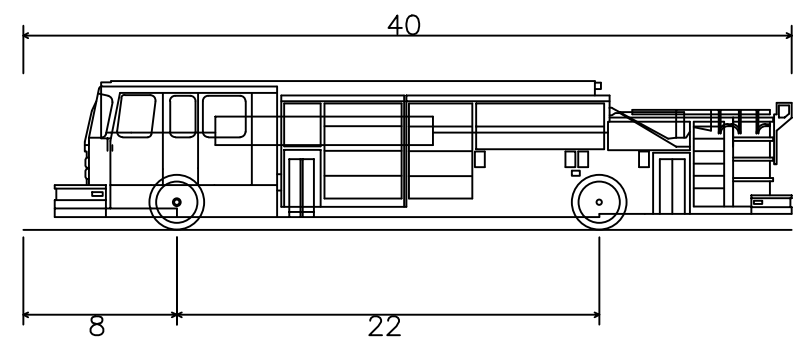
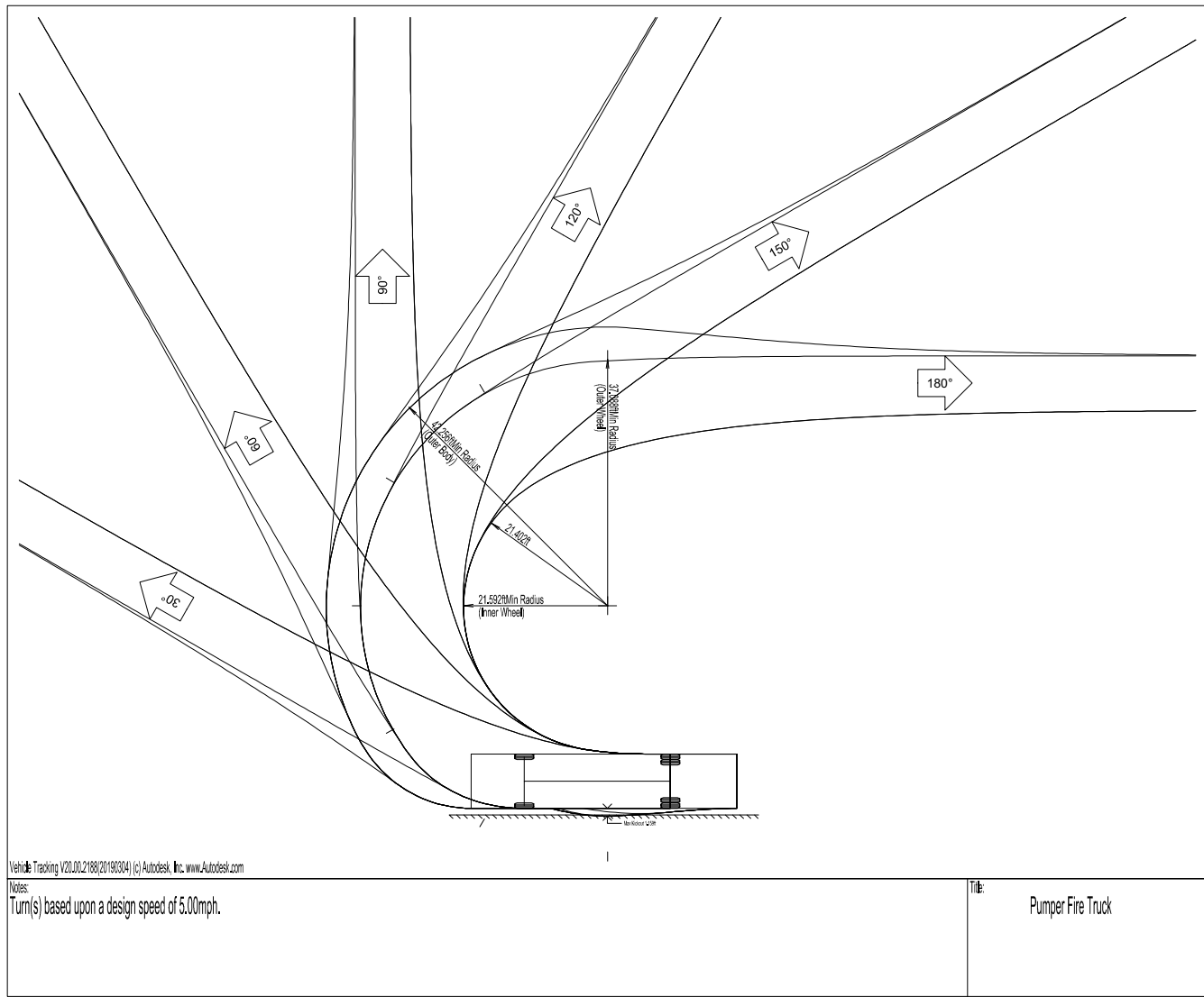
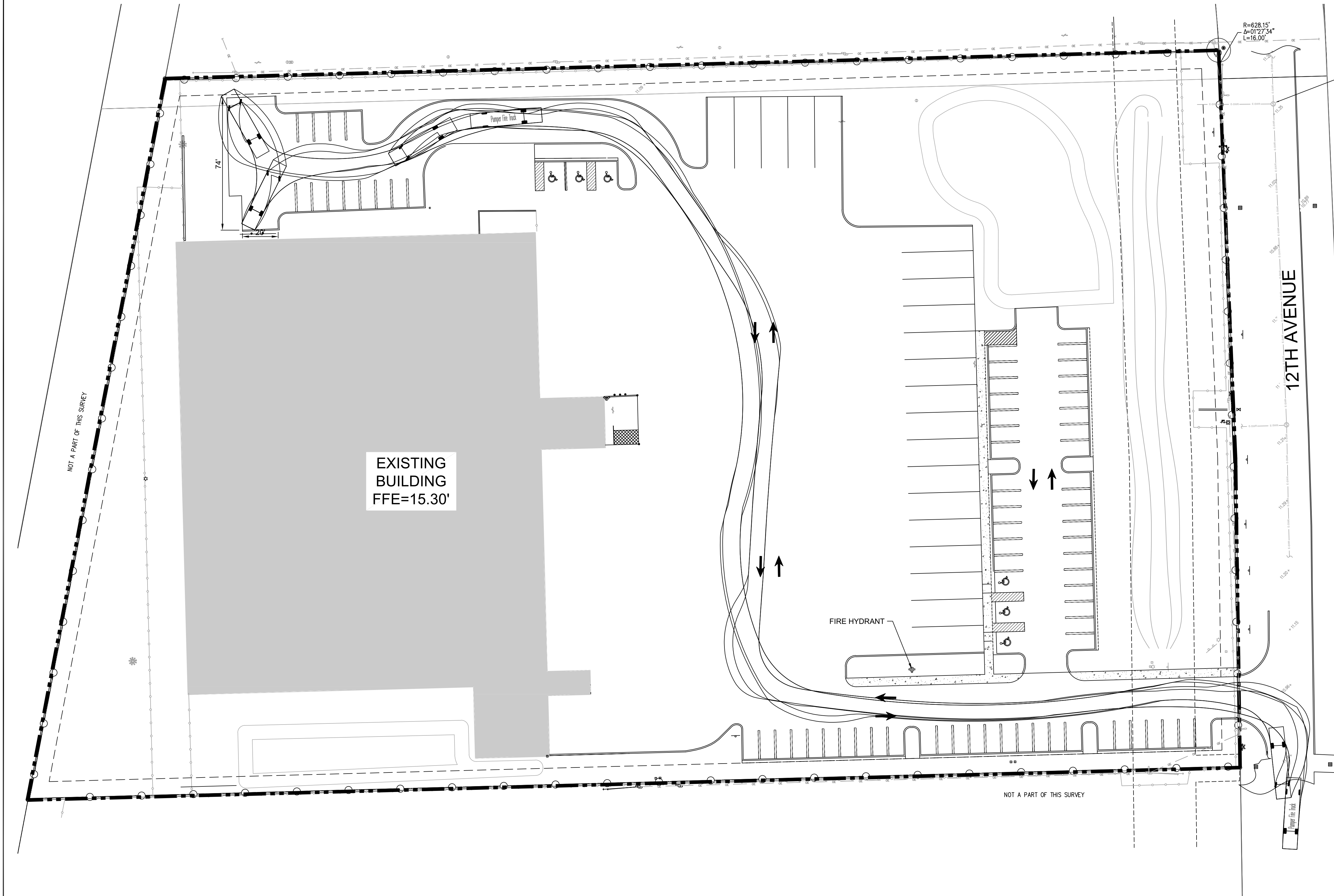




ADAM SWANEY, P.E., PROFESSIONAL ENGINEER LICENSE NO. 72235.  
THIS DOCUMENT HAS BEEN ELECTRONICALLY SIGNED AND  
SEALED BY ADAM SWANEY, P.E. USING A SHA-1 AUTHENTICATION CODE.  
PRINTED COPIES OF THIS DOCUMENT ARE NOT CONSIDERED SIGNED AND  
SEALED AND THE SHA-1 AUTHENTICATION CODE MUST BE VERIFIED ON ANY  
ELECTRONIC COPIES.

PLOT: 11/1/2022 11:41:56 AM



Pumper Fire Truck	Overall Length	40.000ft
	Overall Width	8.167ft
	Overall Body Height	7.745ft
	Min Body Ground Clearance	0.656ft
	Track Width	22.167ft
	Lock-to-lock time	45.00s
	Max Wheel Angle	45.00°

**DRC**  
PZ22-12000023  
12/07/2022

NO.	DATE	REVISIONS	BY

© COPYRIGHT 2022 BY  
ENGINEERING GROUP, INC. THIS  
DRAWING IS PROVIDED FOR  
INFORMATIONAL PURPOSES ONLY.  
UNLESS SPECIFICALLY SIGNED BY  
THE ENGINEER REPRESENTING  
ENGINEERING GROUP, INC.  
ADAM SWANEY, P.E.  
NO. 72235

Digitally signed by  
Adam Swaney  
Date: 2022.11.01  
11:43:33 -04'00'

MARTIN BROWER INDUSTRIAL  
1661 NW 12TH AVENUE  
POMPAHO BEACH, FLORIDA  
LIFE SAFETY/AUTOTURN ANALYSIS

A Higher Standard of Excellence  
**engenuity** group inc.  
ENGINEERS • SURVEYORS • GIS ANALYSTS  
1280 N. CONGRESS AVE. SUITE 101  
WEST PALM BEACH, FLORIDA 33409  
PH (561) 955-1151 • FAX (561) 955-5390  
WWW.ENGENUTGROUP.COM CERTIFICATE OF AUTHORIZATION #7095

DATE	DR.	BY	PROJ.	ENG.	MANAGER	CHECKED	NO.
OCTOBER 2022		RB		ACS		RB	
						ACS	